



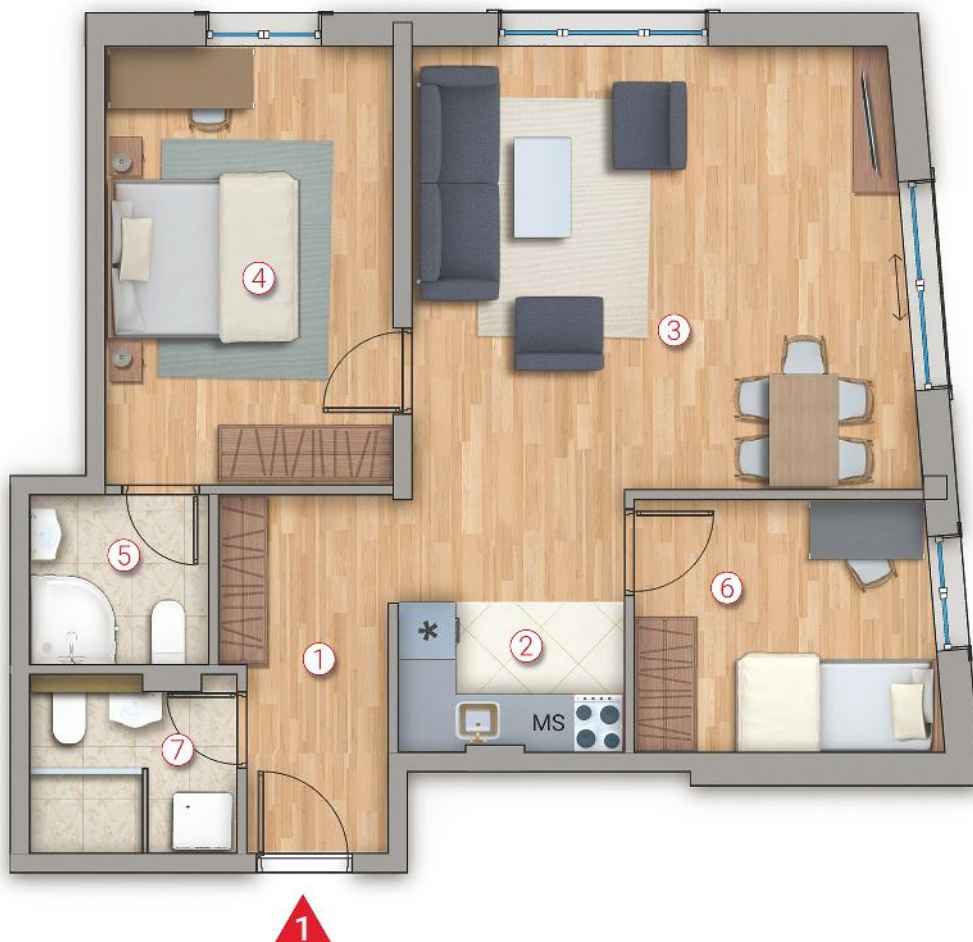




11000 BEOGRAD  
 ul. Miloša Zečevića 1  
 Tel. +381 11/2417 747  
 email: inprus.bg@gmail.com



## STAN 1 - 68.27m<sup>2</sup> - PRIZEMLJE

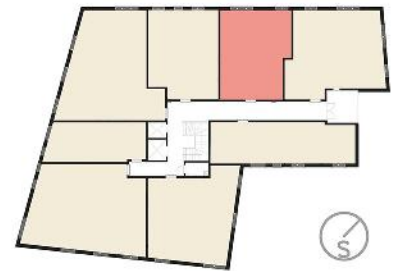


STAN br. 1	
NAZIV PROSTORIJE	POVRŠINA
I. hodnik	6.24 m <sup>2</sup>
II. kuhinja	6.54 m <sup>2</sup>
III. dnevna soba/trpezarija	24.80 m <sup>2</sup>
IV. spavaca soba 1	14.63 m <sup>2</sup>
V. kupatilo	3.42 m <sup>2</sup>
VI. spavaca soba 2	8.55 m <sup>2</sup>
VII. kupatilo	4.09 m <sup>2</sup>
<b>UKUPNO</b>	<b>68.27 m<sup>2</sup></b>



11000 BEOGRAD  
 ul. Miloša Zečevića 1  
 Tel. +381 11/2417 747  
 email: inprus.bg@gmail.com

ul. ILINDENSKA



ul. VOJE VELJKOVIĆA

**STAN 2 - 53.42m<sup>2</sup> - PRIZEMLJE**



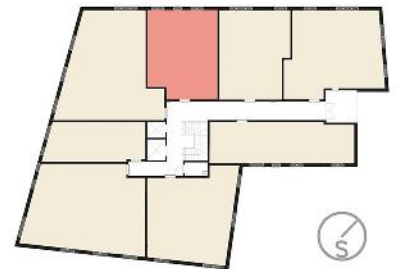
**2**

STAN br. 2	
NAZIV PROSTORIJE	POVRŠINA
I. hodnik	5.85 m <sup>2</sup>
II. dnevna soba	17.90 m <sup>2</sup>
III. trpezarija	8.13 m <sup>2</sup>
IV. kuhinja	4.46 m <sup>2</sup>
V. spavaca soba	12.97 m <sup>2</sup>
VI. kupatilo	4.11 m <sup>2</sup>
<b>UKUPNO</b>	<b>53.42 m<sup>2</sup></b>



11000 BEOGRAD  
 ul. Miloša Zečevića 1  
 Tel. +381 11/2417 747  
 email: inprus.bg@gmail.com

ul. ILINDENSKA



ul. VOJE VELJKOVIĆA

**STAN 3 - 53.53m<sup>2</sup> - PRIZEMLJE**

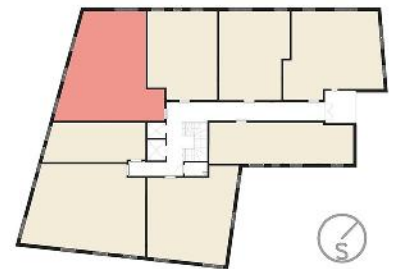


STAN br. 3	
NAZIV PROSTORIJE	POVRŠINA
I. ulaz	2.80 m <sup>2</sup>
II. trpezarija	11.21 m <sup>2</sup>
III. dnevna soba	16.74 m <sup>2</sup>
IV. kuhinja	4.65 m <sup>2</sup>
V. spavaca soba	13.65 m <sup>2</sup>
VI. kupatilo	4.47 m <sup>2</sup>
<b>UKUPNO</b>	<b>53.52 m<sup>2</sup></b>



11000 BEOGRAD  
 ul. Miloša Zečevića 1  
 Tel. +381 11/2417 747  
 email: inprus.bg@gmail.com

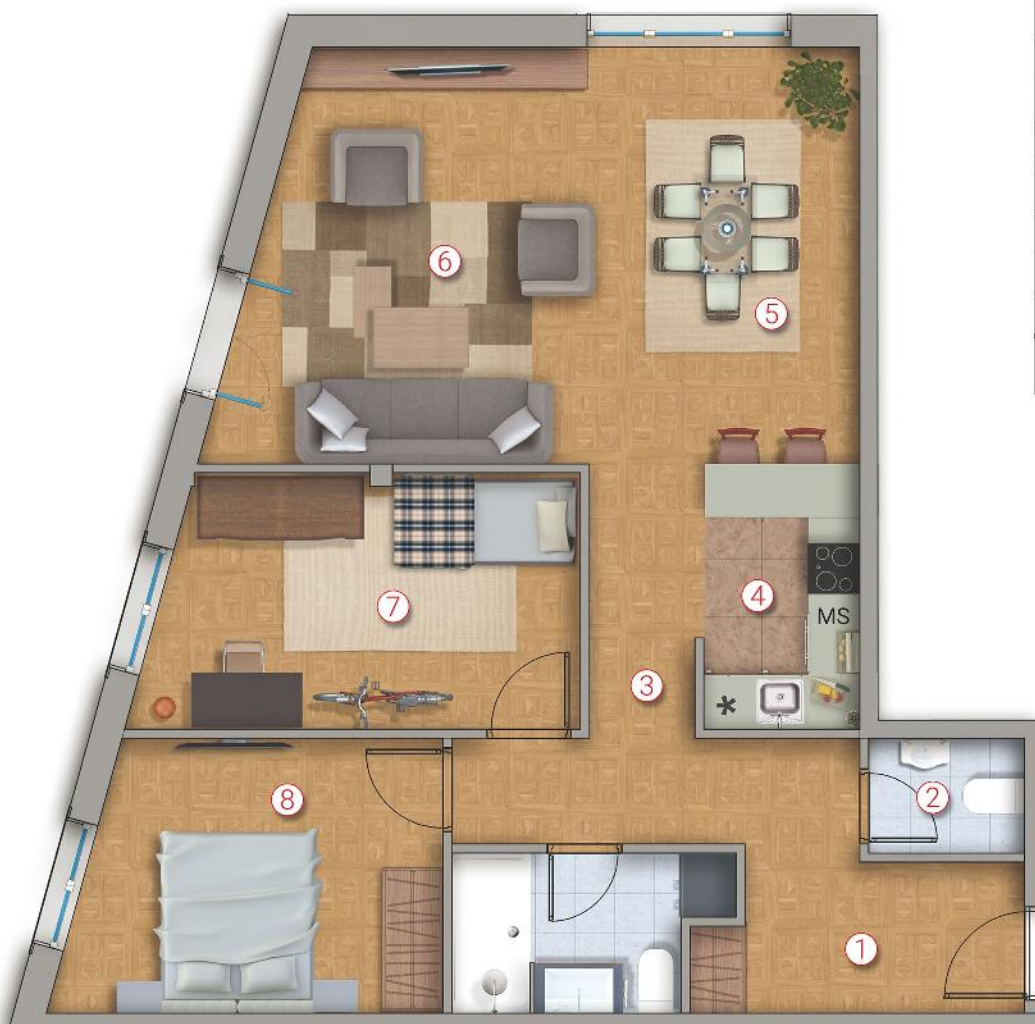
ul. ILINDENSKA



ul. VOJE VELJKOVIĆA

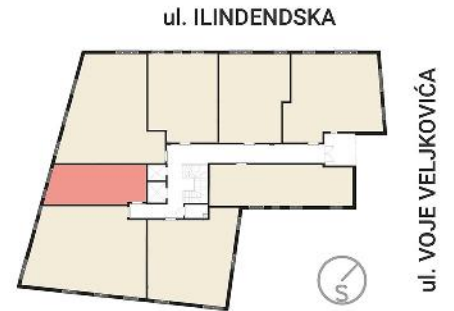
## STAN 4 - 81.06m<sup>2</sup> - PRIZEMLJE

STAN br. 4	
NAZIV PROSTORIJE	POVRŠINA
I. hodnik	7.29 m <sup>2</sup>
II. wc	2.12 m <sup>2</sup>
III. predsoblje	7.32 m <sup>2</sup>
IV. kuhinja	4.92 m <sup>2</sup>
V. trpezarija	13.42 m <sup>2</sup>
VI. dnevna soba	16.62 m <sup>2</sup>
VII. spavaca soba 1	11.75 m <sup>2</sup>
VIII. spavaca soba 2	12.82 m <sup>2</sup>
IX. kupatilo	4.80 m <sup>2</sup>
<b>UKUPNO</b>	<b>81.06 m<sup>2</sup></b>





11000 BEOGRAD  
 ul. Miloša Zečevića 1  
 Tel. +381 11/2417 747  
 email: inprus.bg@gmail.com



**STAN 5 - 34.67m<sup>2</sup> - PRIZEMLJE**

STAN br. 5	
NAZIV PROSTORIJE	POVRŠINA
I. ulaz	2.39 m <sup>2</sup>
II. dnevna soba/trpezarija	24.09 m <sup>2</sup>
III. kuhinja	3.49 m <sup>2</sup>
IV. kupatilo	4.70 m <sup>2</sup>
<b>UKUPNO</b>	<b>34.67 m<sup>2</sup></b>





11000 BEOGRAD  
 ul. Miloša Zečevića 1  
 Tel. +381 11/2417 747  
 email: inprus.bg@gmail.com



**STAN 6 - 86.80m<sup>2</sup> - PRIZEMLJE**

STAN br. 6	
NAZIV PROSTORIJE	POVRŠINA
I. hodnik	9.28 m2
II. kuhinja/trpezarija	15.78 m2
III. dnevna soba	25.86 m2
IV. spavaca soba 1	14.40 m2
V. spavaca soba 2	14.33 m2
VI. kupatilo	4.76 m2
VII. wc	2.39 m2
<b>UKUPNO</b>	<b>86.80 m2</b>







11000 BEOGRAD  
 ul. Miloša Zečevića 1  
 Tel. +381 11/2417 747  
 email: inprus.bg@gmail.com



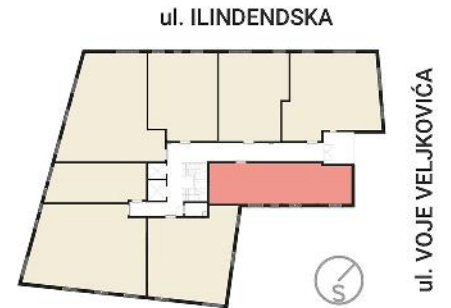
**STAN 7 - 66.36m<sup>2</sup> - PRIZEMLJE**

STAN br. 7	
NAZIV PROSTORIJE	POVRŠINA
I. hodnik	4.23 m <sup>2</sup>
II. dn. soba/trpezarija	28.70 m <sup>2</sup>
III. kuhinja	4.08 m <sup>2</sup>
IV. spavaca soba 1	16.42 m <sup>2</sup>
V. spavaca soba 2	8.73 m <sup>2</sup>
VI. kupatilo	4.20 m <sup>2</sup>
<b>UKUPNO</b>	<b>66.36 m<sup>2</sup></b>





11000 BEOGRAD  
 ul. Miloša Zečevića 1  
 Tel. +381 11/2417 747  
 email: inprus.bg@gmail.com



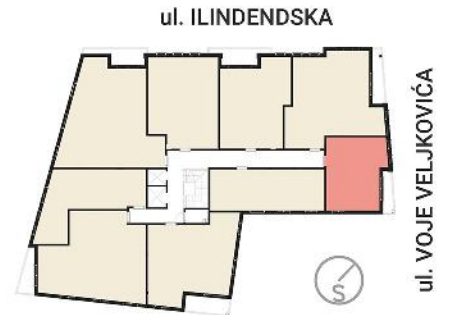
**STAN 8 - 52.55m<sup>2</sup> - PRIZEMLJE**

STAN br. 8	
NAZIV PROSTORIJE	POVRŠINA
I. dnevna soba	18.17 m <sup>2</sup>
II. kuhinja/trpezarija	5.16 m <sup>2</sup>
III. predsoblje	3.24 m <sup>2</sup>
IV. spavaca soba 1	12.97 m <sup>2</sup>
V. spavaca soba 2	9.01 m <sup>2</sup>
VI. kupatilo	4.00 m <sup>2</sup>
<b>UKUPNO</b>	<b>52.55 m<sup>2</sup></b>





11000 BEOGRAD  
 ul. Miloša Zečevića 1  
 Tel. +381 11/2417 747  
 email: inprus.bg@gmail.com



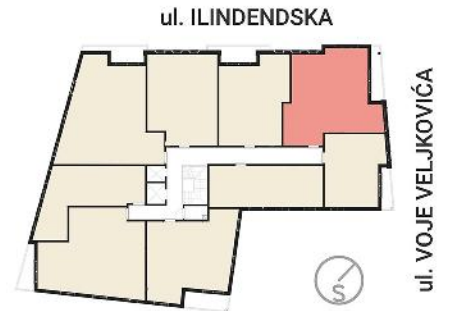
**STAN 9 - 40.57m<sup>2</sup> - I SPRAT**

STAN br. 9	
NAZIV PROSTORIJE	POVRŠINA
I. hodnik	2.72 m <sup>2</sup>
II. dn. soba/trpezarija	16.51 m <sup>2</sup>
III. kuhinja	3.60 m <sup>2</sup>
IV. spavaca soba	10.46 m <sup>2</sup>
V. kupatilo	3.77 m <sup>2</sup>
VI. terasa	3.51 m <sup>2</sup>
<b>UKUPNO</b>	<b>40.57 m<sup>2</sup></b>





11000 BEOGRAD  
 ul. Miloša Zečevića 1  
 Tel. +381 11/2417 747  
 email: inprus.bg@gmail.com



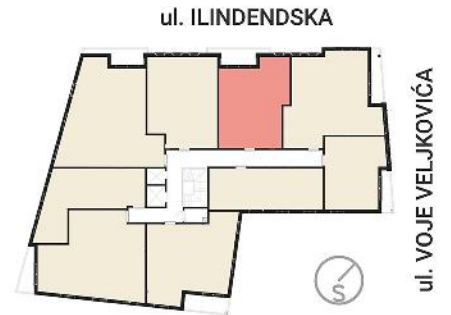
**STAN 10 - 70.49m<sup>2</sup> - I SPRAT**

STAN br. 10	
NAZIV PROSTORIJE	POVRŠINA
I. hodnik	6.81 m <sup>2</sup>
II. kuhinja	3.74 m <sup>2</sup>
III. dnevna soba/trpezarija	24.16 m <sup>2</sup>
IV. spavaca soba 1	14.18 m <sup>2</sup>
V. kupatilo	3.42 m <sup>2</sup>
VI. spavaca soba 2	8.55 m <sup>2</sup>
VII. kupatilo	4.51 m <sup>2</sup>
VIII. terasa	5.12 m <sup>2</sup>
<b>UKUPNO</b>	<b>70.49 m<sup>2</sup></b>





11000 BEOGRAD  
 ul. Miloša Zečevića 1  
 Tel. +381 11/2417 747  
 email: inprus.bg@gmail.com



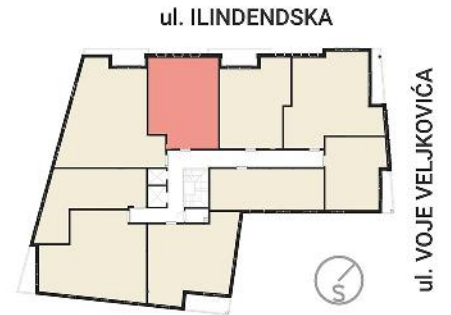
**STAN 11 - 56.50m<sup>2</sup> - I SPRAT**



STAN br. 11	
NAZIV PROSTORIJE	POVRŠINA
I. hodnik	4.50 m <sup>2</sup>
II. dnevna soba	18.69 m <sup>2</sup>
III. trpezarija	6.24 m <sup>2</sup>
IV. kuhinja	3.73 m <sup>2</sup>
V. spavaca soba	12.66 m <sup>2</sup>
VI. kupatilo	4.52 m <sup>2</sup>
VII. terasa	6.16 m <sup>2</sup>
<b>UKUPNO</b>	<b>56.50 m<sup>2</sup></b>



11000 BEOGRAD  
 ul. Miloša Zečevića 1  
 Tel. +381 11/2417 747  
 email: inprus.bg@gmail.com



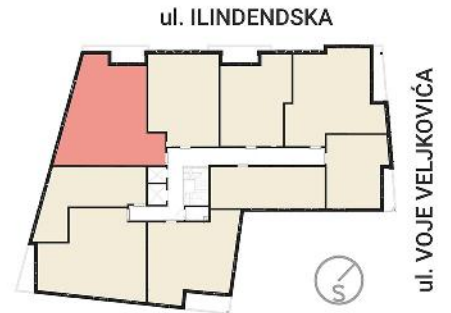
## STAN 12 - 54.33m<sup>2</sup> - I SPRAT

STAN br. 12	
NAZIV PROSTORIJE	POVRŠINA
I. ulaz	3.14 m <sup>2</sup>
II. trpezarija	14.67 m <sup>2</sup>
III. dnevna soba	13.73 m <sup>2</sup>
IV. kuhinja	4.51 m <sup>2</sup>
V. spavaca soba	13.35 m <sup>2</sup>
VI. kupatilo	4.93 m <sup>2</sup>
<b>UKUPNO</b>	<b>54.33 m<sup>2</sup></b>



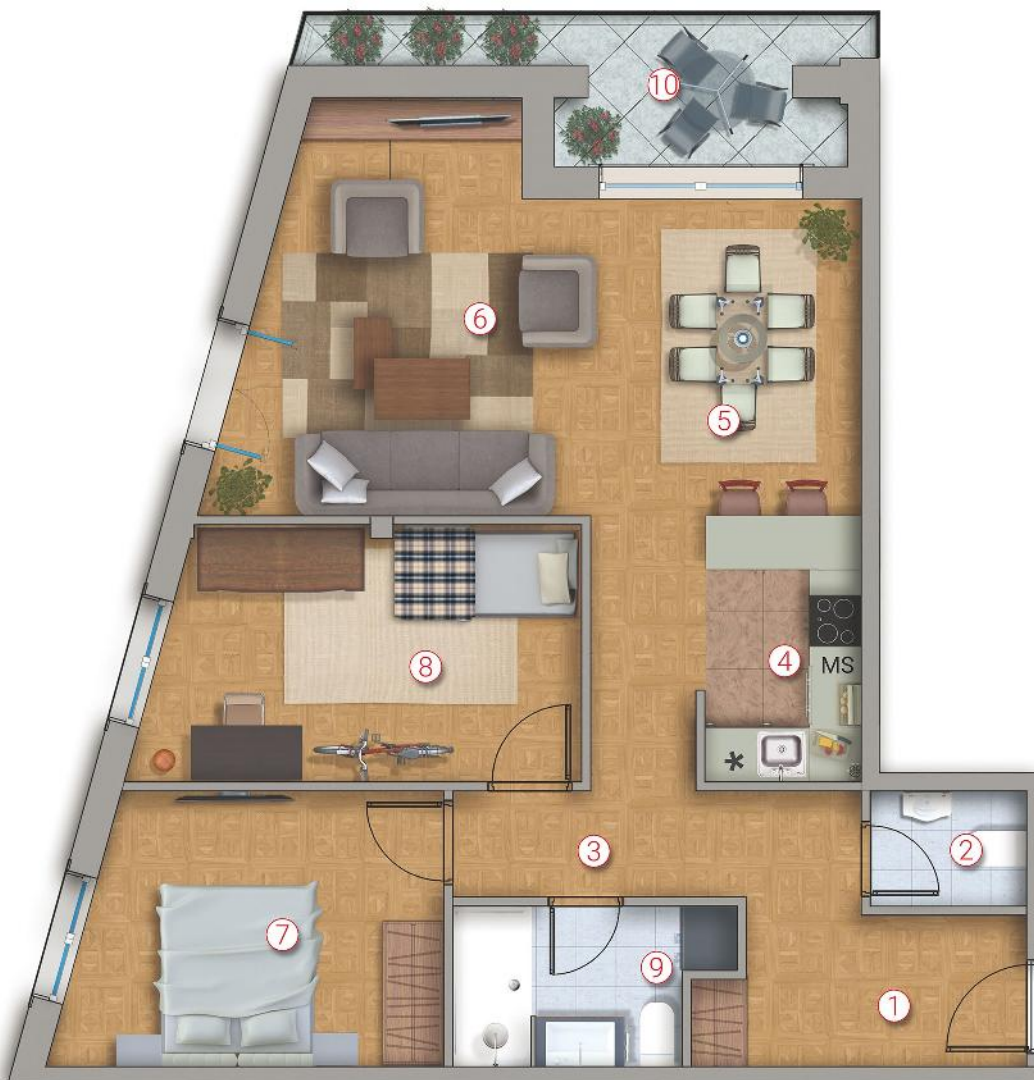


11000 BEOGRAD  
 ul. Miloša Zečevića 1  
 Tel. +381 11/2417 747  
 email: inprus.bg@gmail.com



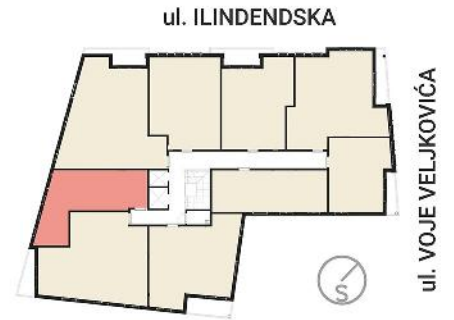
**STAN 13 - 83.20m<sup>2</sup> - I SPRAT**

STAN br. 13	
NAZIV PROSTORIJE	POVRŠINA
I. hodnik	7.29 m <sup>2</sup>
II. wc	2.12 m <sup>2</sup>
III. predsoblje	7.32 m <sup>2</sup>
IV. kuhinja	4.93 m <sup>2</sup>
V. trpezarija	10.18 m <sup>2</sup>
VI. dnevna soba	15.79 m <sup>2</sup>
VII. spavaca soba 1	11.75 m <sup>2</sup>
VIII. spavaca soba 2	12.82 m <sup>2</sup>
IX. kupatilo	4.80 m <sup>2</sup>
X. terasa	6.20 m <sup>2</sup>
<b>UKUPNO</b>	<b>83.20 m<sup>2</sup></b>





11000 BEOGRAD  
 ul. Miloša Zečevića 1  
 Tel. +381 11/2417 747  
 email: inprus.bg@gmail.com



**STAN 14 - 44.10m<sup>2</sup> - I SPRAT**

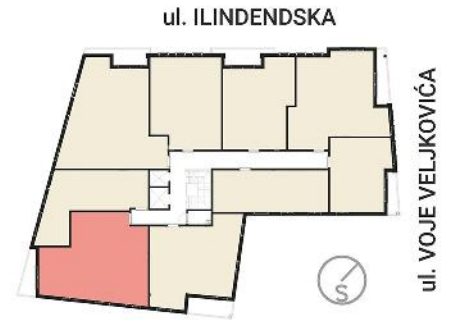
STAN br. 14	
NAZIV PROSTORIJE	POVRŠINA
I. ulaz	2.39 m <sup>2</sup>
II. dnevna soba/trpezarija	24.10 m <sup>2</sup>
III. kuhinja	3.46 m <sup>2</sup>
IV. kupatilo	4.70 m <sup>2</sup>
V. spavaca soba	9.45 m <sup>2</sup>
<b>UKUPNO</b>	<b>44.10 m<sup>2</sup></b>





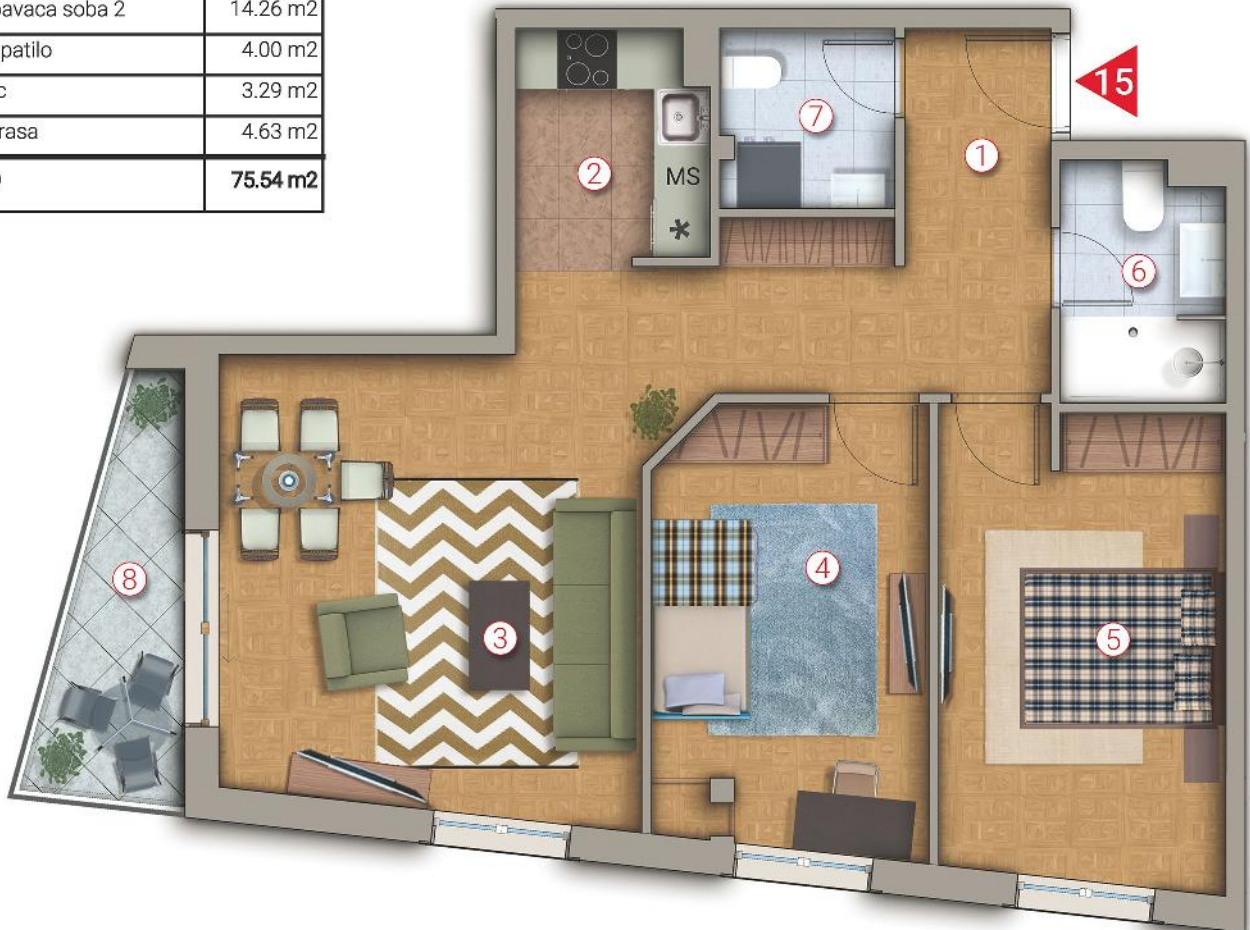


11000 BEOGRAD  
 ul. Miloša Zečevića 1  
 Tel. +381 11/2417 747  
 email: inprus.bg@gmail.com



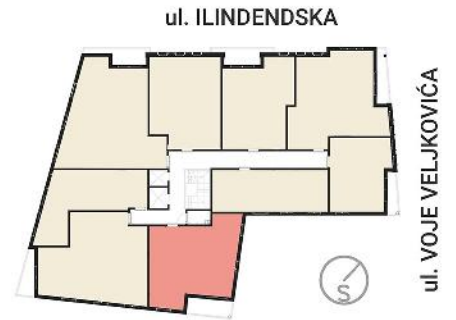
STAN br. 15	
NAZIV PROSTORIJE	POVRŠINA
I. hodnik	9.30 m <sup>2</sup>
II. kuhinja	4.65 m <sup>2</sup>
III. dnevna soba/trpezarija	22.71 m <sup>2</sup>
IV. spavaca soba 1	12.70 m <sup>2</sup>
V. spavaca soba 2	14.26 m <sup>2</sup>
VI. kupatilo	4.00 m <sup>2</sup>
VII. wc	3.29 m <sup>2</sup>
VIII. terasa	4.63 m <sup>2</sup>
<b>UKUPNO</b>	<b>75.54 m<sup>2</sup></b>

## STAN 15 - 75.54m<sup>2</sup> - I SPRAT



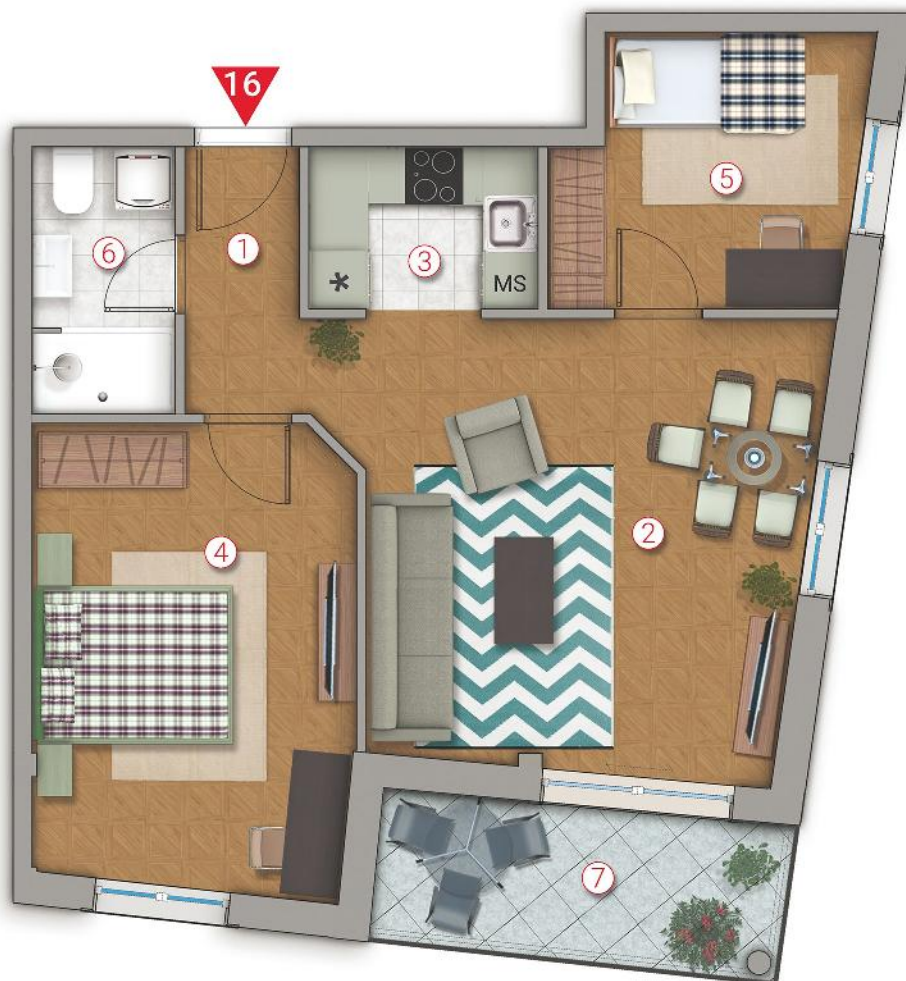


11000 BEOGRAD  
 ul. Miloša Zečevića 1  
 Tel. +381 11/2417 747  
 email: inprus.bg@gmail.com



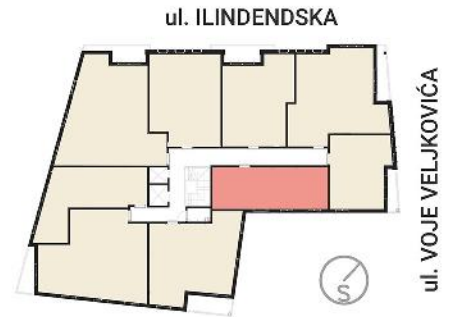
**STAN 16 - 65.56m<sup>2</sup> - I SPRAT**

STAN br. 16	
NAZIV PROSTORIJE	POVRŠINA
I. hodnik	4.23 m <sup>2</sup>
II. dnevna soba/trpezarija	21.78 m <sup>2</sup>
III. kuhinja	4.08 m <sup>2</sup>
IV. spavaca soba 1	16.24 m <sup>2</sup>
V. spavaca soba 2	8.73 m <sup>2</sup>
VI. kupatilo	4.20 m <sup>2</sup>
VII. terasa	6.30 m <sup>2</sup>
<b>UKUPNO</b>	<b>65.56 m<sup>2</sup></b>





11000 BEOGRAD  
 ul. Miloša Zečevića 1  
 Tel. +381 11/2417 747  
 email: inprus.bg@gmail.com



**STAN 17 - 42.20m<sup>2</sup> - I SPRAT**

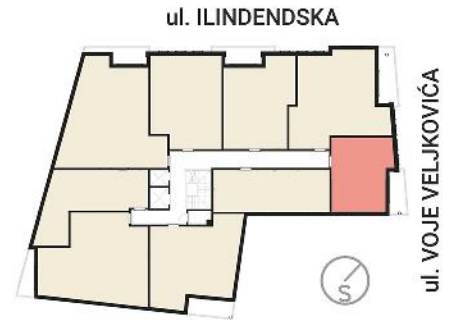
STAN br. 17	
NAZIV PROSTORIJE	POVRŠINA
I. hodnik	2.04 m <sup>2</sup>
II. kuhinja/trpezarija	5.16 m <sup>2</sup>
III. dnevna soba	19.55 m <sup>2</sup>
IV. spavaca soba	11.45 m <sup>2</sup>
V. kupatilo	4.00 m <sup>2</sup>
<b>UKUPNO</b>	<b>42.20 m<sup>2</sup></b>

17





11000 BEOGRAD  
 ul. Miloša Zečevića 1  
 Tel. +381 11/2417 747  
 email: inprus.bg@gmail.com



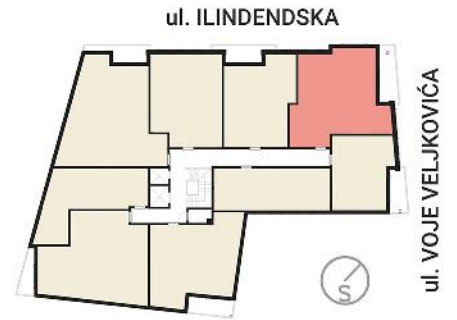
**STAN 18 - 43.03m<sup>2</sup> - II SPRAT**

STAN br. 18	
NAZIV PROSTORIJE	POVRŠINA
I. hodnik	2.72 m <sup>2</sup>
II. dnevna soba/trpezarija	16.51 m <sup>2</sup>
III. kuhinja	3.60 m <sup>2</sup>
IV. spavaca soba	10.46 m <sup>2</sup>
V. kupatilo	3.77 m <sup>2</sup>
VI. terasa	5.97 m <sup>2</sup>
<b>UKUPNO</b>	<b>43.03 m<sup>2</sup></b>





11000 BEOGRAD  
 ul. Miloša Zečevića 1  
 Tel. +381 11/2417 747  
 email: inprus.bg@gmail.com



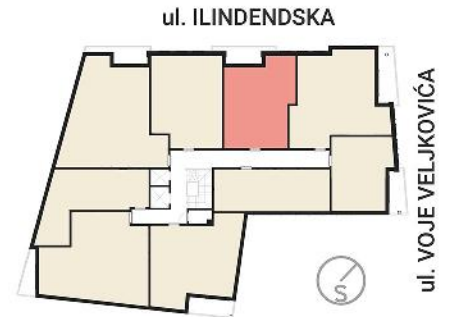
STAN br. 19	
NAZIV PROSTORIJE	POVRŠINA
I. hodnik	6.81 m <sup>2</sup>
II. kuhinja	3.74 m <sup>2</sup>
III. dnevna soba/trpezarija	24.16 m <sup>2</sup>
IV. spavaca soba 1	14.18 m <sup>2</sup>
V. kupatilo	3.42 m <sup>2</sup>
VI. spavaca soba 2	8.55 m <sup>2</sup>
VII. kupatilo	4.51 m <sup>2</sup>
VIII. terasa	8.37 m <sup>2</sup>
<b>UKUPNO</b>	<b>73.74 m<sup>2</sup></b>

## STAN 19 - 73.74m<sup>2</sup> - II SPRAT





11000 BEOGRAD  
 ul. Miloša Zečevića 1  
 Tel. +381 11/2417 747  
 email: inprus.bg@gmail.com



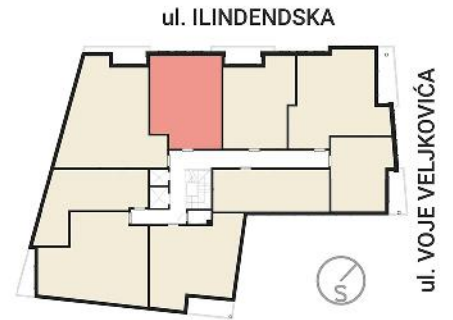
**STAN 20 - 56.50m<sup>2</sup> - II SPRAT**



STAN br. 20	
NAZIV PROSTORIJE	POVRŠINA
I. hodnik	4.50 m2
II. dnevna soba	18.69 m2
III. trpezarija	6.24 m2
IV. kuhinja	3.73 m2
V. spavaca soba	12.66 m2
VI. kupatilo	4.52 m2
VII. terasa	6.16 m2
<b>UKUPNO</b>	<b>56.50 m2</b>



11000 BEOGRAD  
 ul. Miloša Zečevića 1  
 Tel. +381 11/2417 747  
 email: inprus.bg@gmail.com



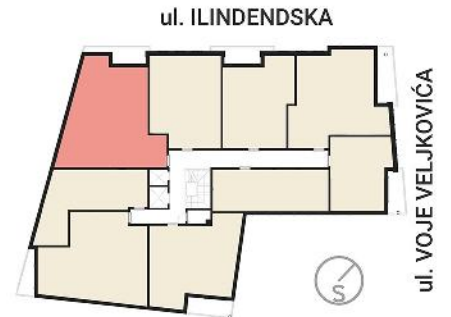
**STAN 21 - 54.33m<sup>2</sup> - II SPRAT**



STAN br. 21	
NAZIV PROSTORIJE	POVRŠINA
I. ulaz	3.14 m2
II. trpezarija	14.67 m2
III. dnevna soba	13.73 m2
IV. kuhinja	4.51 m2
V. spavaca soba	13.35 m2
VI. kupatilo	4.93 m2
<b>UKUPNO</b>	<b>54.33 m2</b>

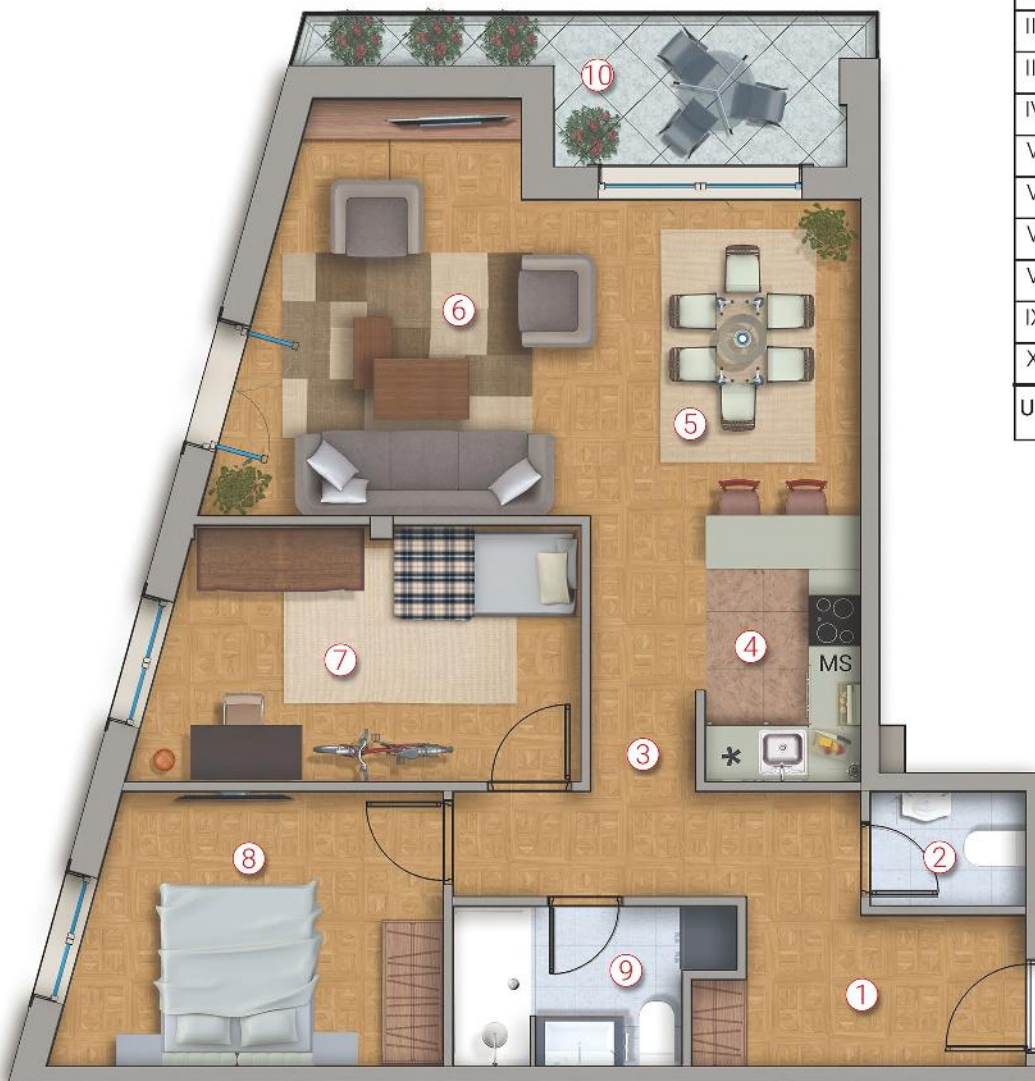


11000 BEOGRAD  
 ul. Miloša Zečevića 1  
 Tel. +381 11/2417 747  
 email: inprus.bg@gmail.com



**STAN 22 - 83.20m<sup>2</sup> - II SPRAT**

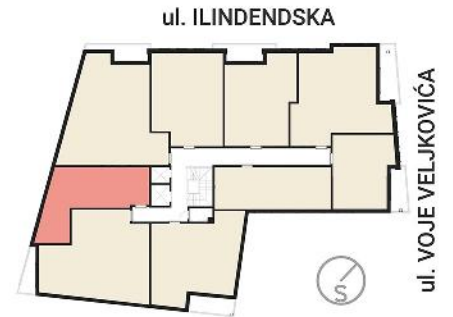
STAN br. 22	
NAZIV PROSTORIJE	POVRŠINA
I. hodnik	7.29 m <sup>2</sup>
II. wc	2.12 m <sup>2</sup>
III. predsoblje	7.32 m <sup>2</sup>
IV. kuhinja	4.93 m <sup>2</sup>
V. trpezarija	10.18 m <sup>2</sup>
VI. dnevna soba	15.79 m <sup>2</sup>
VII. spavaca soba 1	11.75 m <sup>2</sup>
VIII. spavaca soba 2	12.82 m <sup>2</sup>
IX. kupatilo	4.80 m <sup>2</sup>
X. terasa	6.20 m <sup>2</sup>
<b>UKUPNO</b>	<b>83.20 m<sup>2</sup></b>







11000 BEOGRAD  
 ul. Miloša Zečevića 1  
 Tel. +381 11/2417 747  
 email: inprus.bg@gmail.com



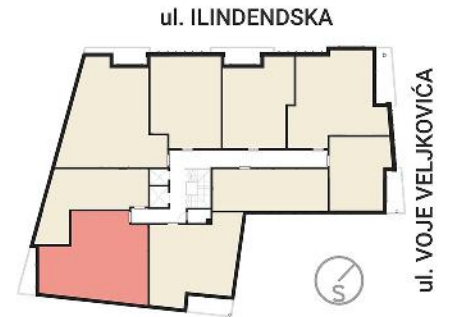
**STAN 23 - 44.10m<sup>2</sup> - II SPRAT**

STAN br. 23	
NAZIV PROSTORIJE	POVRŠINA
I. ulaz	2.39 m2
II. dnevna soba/trpezarija	24.10 m2
III. kuhinja	3.46 m2
IV. kupatilo	4.70 m2
V. spavaca soba	9.45 m2
<b>UKUPNO</b>	<b>44.10 m2</b>



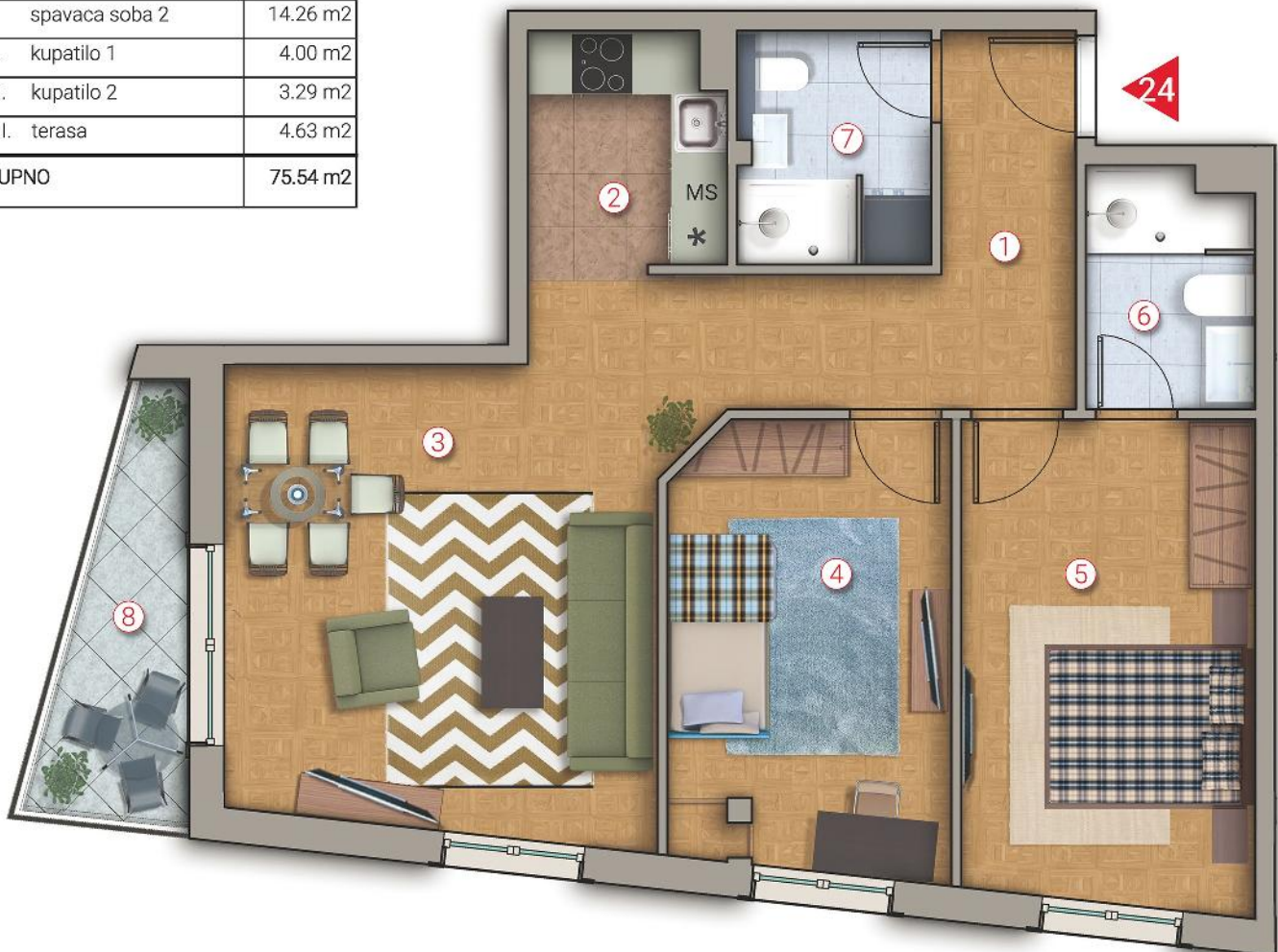


11000 BEOGRAD  
 ul. Miloša Zečevića 1  
 Tel. +381 11/2417 747  
 email: inprus.bg@gmail.com



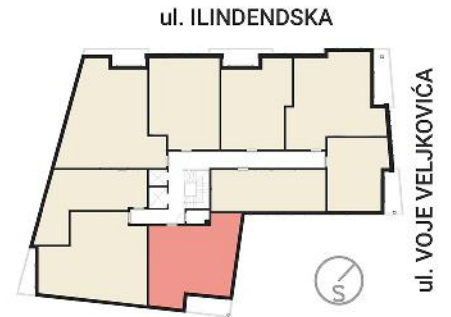
STAN br. 24	
NAZIV PROSTORIJE	POVRŠINA
I. hodnik	9.30 m <sup>2</sup>
II. kuhinja	4.65 m <sup>2</sup>
III. dnevna soba/trpezarija	22.71 m <sup>2</sup>
IV. spavaca soba 1	12.70 m <sup>2</sup>
V. spavaca soba 2	14.26 m <sup>2</sup>
VI. kupatilo 1	4.00 m <sup>2</sup>
VII. kupatilo 2	3.29 m <sup>2</sup>
VIII. terasa	4.63 m <sup>2</sup>
<b>UKUPNO</b>	<b>75.54 m<sup>2</sup></b>

## STAN 24 - 74.54m<sup>2</sup> - II SPRAT





11000 BEOGRAD  
 ul. Miloša Zečevića 1  
 Tel. +381 11/2417 747  
 email: inprus.bg@gmail.com



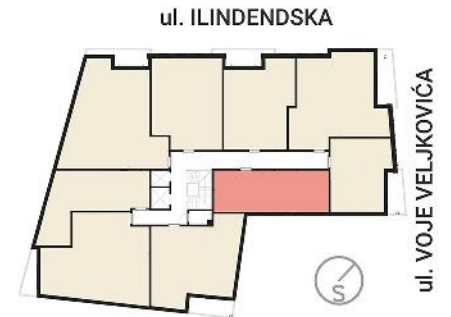
STAN br. 25	
NAZIV PROSTORIJE	POVRŠINA
I. hodnik	4.23 m <sup>2</sup>
II. dnevna soba/trpezarija	21.78 m <sup>2</sup>
III. kuhinja	4.08 m <sup>2</sup>
IV. spavaca soba 1	16.24 m <sup>2</sup>
V. spavaca soba 2	8.73 m <sup>2</sup>
VI. kupatilo	4.20 m <sup>2</sup>
VII. terasa	6.30 m <sup>2</sup>
<b>UKUPNO</b>	<b>65.56 m<sup>2</sup></b>

## STAN 25 - 65.56m<sup>2</sup> - II SPRAT





11000 BEOGRAD  
 ul. Miloša Zečevića 1  
 Tel. +381 11/2417 747  
 email: inprus.bg@gmail.com



## STAN 26 - 42.20m<sup>2</sup> - II SPRAT

STAN br. 26

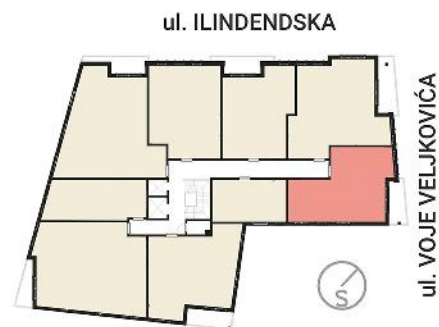
NAZIV PROSTORIJE	POVRŠINA
I. hodnik	2.04 m <sup>2</sup>
II. kuhinja/trpezarija	5.16 m <sup>2</sup>
III. dnevna soba	19.55 m <sup>2</sup>
IV. spavaca soba	11.45 m <sup>2</sup>
V. kupatilo	4.00 m <sup>2</sup>
<b>UKUPNO</b>	<b>42.20 m<sup>2</sup></b>

26





11000 BEOGRAD  
 ul. Miloša Zečevića 1  
 Tel. +381 11/2417 747  
 email: inprus.bg@gmail.com



STAN br. 27	
NAZIV PROSTORIJE	POVRŠINA
I. hodnik	5.57 m <sup>2</sup>
II. dnevna soba	15.91 m <sup>2</sup>
III. kuhinja/trpezarija	6.26 m <sup>2</sup>
IV. spavaca soba 1	10.76 m <sup>2</sup>
V. spavaca soba 2	9.88 m <sup>2</sup>
VI. kupatilo	3.77 m <sup>2</sup>
VII. terasa	5.97 m <sup>2</sup>
<b>UKUPNO</b>	<b>58.12 m<sup>2</sup></b>

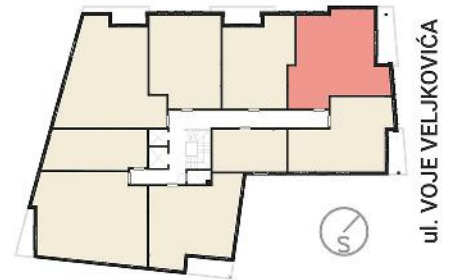
## STAN 27 - 58.12m<sup>2</sup> - III SPRAT





11000 BEOGRAD  
 ul. Miloša Zečevića 1  
 Tel. +381 11/2417 747  
 email: inprus.bg@gmail.com

ul. ILINDENSKA



**STAN 28 - 73.74m<sup>2</sup> - III SPRAT**

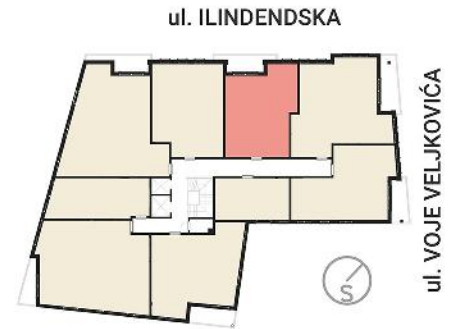


28

STAN br. 28	
NAZIV PROSTORIJE	POVRŠINA
I. hodnik	6.81 m <sup>2</sup>
II. kuhinja	3.74 m <sup>2</sup>
III. dnevna soba/trpezarija	24.16 m <sup>2</sup>
IV. spavaca soba 1	14.18 m <sup>2</sup>
V. kupatilo	3.42 m <sup>2</sup>
VI. spavaca soba 2	8.55 m <sup>2</sup>
VII. kupatilo	4.51 m <sup>2</sup>
VIII. terasa	8.37 m <sup>2</sup>
<b>UKUPNO</b>	<b>73.74 m<sup>2</sup></b>



11000 BEOGRAD  
 ul. Miloša Zečevića 1  
 Tel. +381 11/2417 747  
 email: inprus.bg@gmail.com



STAN br. 29	
NAZIV PROSTORIJE	POVRŠINA
I. hodnik	4.50 m <sup>2</sup>
II. dnevna soba	18.69 m <sup>2</sup>
III. trpezarija	6.24 m <sup>2</sup>
IV. kuhinja	3.73 m <sup>2</sup>
V. spavaca soba	12.66 m <sup>2</sup>
VI. kupatilo	4.52 m <sup>2</sup>
VII. terasa	6.16 m <sup>2</sup>
<b>UKUPNO</b>	<b>56.50 m<sup>2</sup></b>

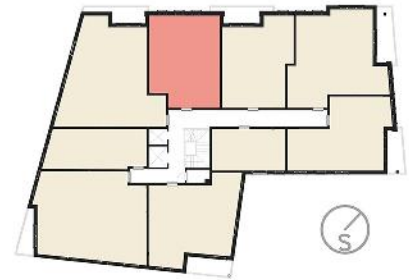
## STAN 29 - 56.50m<sup>2</sup> - III SPRAT





11000 BEOGRAD  
 ul. Miloša Zečevića 1  
 Tel. +381 11/2417 747  
 email: inprus.bg@gmail.com

ul. ILINDENSKA



STAN br. 30	
NAZIV PROSTORIJE	POVRŠINA
I. ulaz	3.14 m <sup>2</sup>
II. trpezarija	14.67 m <sup>2</sup>
III. dnevna soba	13.73 m <sup>2</sup>
IV. kuhinja	4.51 m <sup>2</sup>
V. spavaca soba	13.35 m <sup>2</sup>
VI. kupatilo	4.93 m <sup>2</sup>
<b>UKUPNO</b>	<b>54.33 m<sup>2</sup></b>

## STAN 30 - 54.33m<sup>2</sup> - III SPRAT



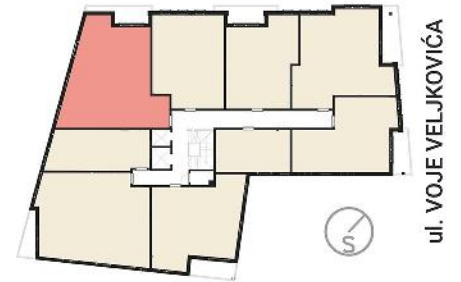
30





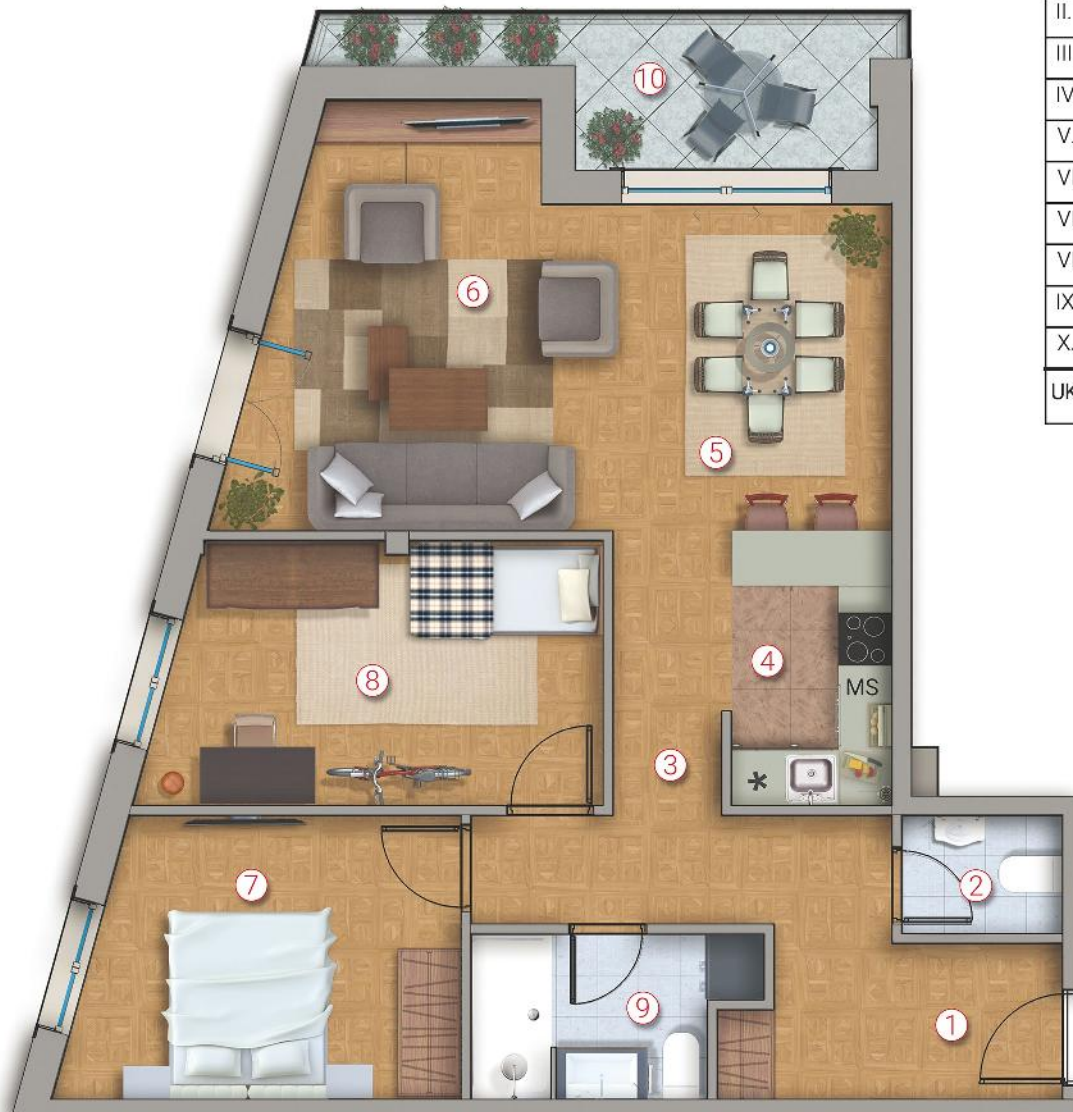
11000 BEOGRAD  
 ul. Miloša Zečevića 1  
 Tel. +381 11/2417 747  
 email: inprus.bg@gmail.com

ul. ILINDENSKA



**STAN 31 - 83.20m<sup>2</sup> - III SPRAT**

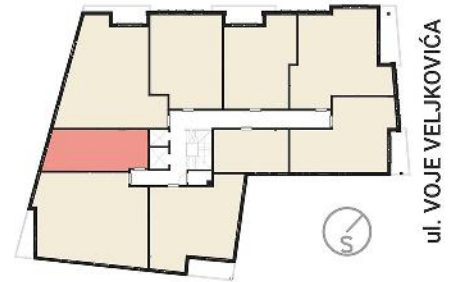
STAN br. 31	
NAZIV PROSTORIJE	POVRŠINA
I. hodnik	7.29 m <sup>2</sup>
II. wc	2.12 m <sup>2</sup>
III. predsoblje	7.32 m <sup>2</sup>
IV. kuhinja	4.93 m <sup>2</sup>
V. trpezarija	10.18 m <sup>2</sup>
VI. dnevna soba	15.79 m <sup>2</sup>
VII. spavaca soba 1	11.75 m <sup>2</sup>
VIII. spavaca soba 2	12.82 m <sup>2</sup>
IX. kupatilo	4.80 m <sup>2</sup>
X. terasa	6.20 m <sup>2</sup>
<b>UKUPNO</b>	<b>83.20 m<sup>2</sup></b>





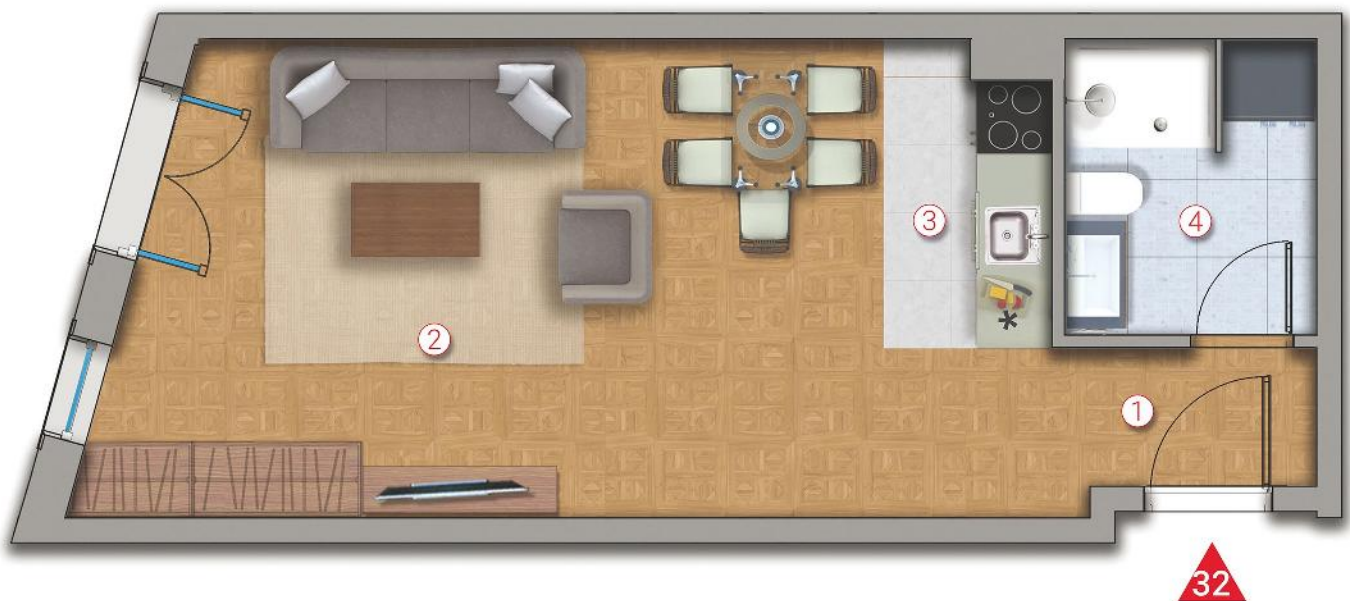
11000 BEOGRAD  
 ul. Miloša Zečevića 1  
 Tel. +381 11/2417 747  
 email: inprus.bg@gmail.com

ul. ILINDENSKA



**STAN 32 - 34.65m<sup>2</sup> - III SPRAT**

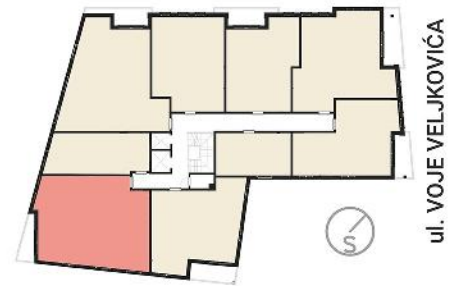
STAN br. 32	
NAZIV PROSTORIJE	POVRŠINA
I. ulaz	2.39 m <sup>2</sup>
II. dnevna soba/trpezarija	24.10 m <sup>2</sup>
III. kuhinja	3.46 m <sup>2</sup>
IV. kupatilo	4.70 m <sup>2</sup>
<b>UKUPNO</b>	<b>34.65 m<sup>2</sup></b>





11000 BEOGRAD  
 ul. Miloša Zečevića 1  
 Tel. +381 11/2417 747  
 email: inprus.bg@gmail.com

ul. ILINDENSKA



## STAN 33 - 85.43m<sup>2</sup> - III SPRAT

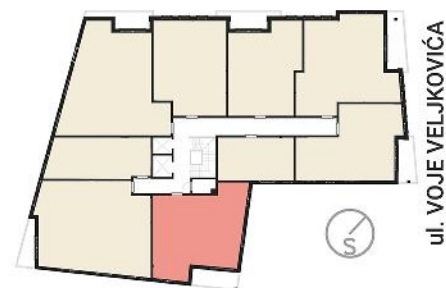
STAN br. 33	
NAZIV PROSTORIJE	POVRŠINA
I. hodnik	8.03 m <sup>2</sup>
II. kuhinja	4.90 m <sup>2</sup>
III. dnevna soba/trpezarija	23.10 m <sup>2</sup>
IV. spavaca soba 1	12.70 m <sup>2</sup>
V. spavaca soba 2	14.32 m <sup>2</sup>
VI. spavaca soba 3	9.20 m <sup>2</sup>
VII. kupatilo 1	4.00 m <sup>2</sup>
VIII. kupatilo 2	4.55 m <sup>2</sup>
IX. terasa	4.63 m <sup>2</sup>
<b>UKUPNO</b>	<b>85.43 m<sup>2</sup></b>





11000 BEOGRAD  
 ul. Miloša Zečevića 1  
 Tel. +381 11/2417 747  
 email: inprus.bg@gmail.com

ul. ILINDENSKA



STAN br. 34	
NAZIV PROSTORIJE	POVRŠINA
I. hodnik	4.23 m <sup>2</sup>
II. dn.soba/trpezarija	21.78 m <sup>2</sup>
III. kuhinja	4.08 m <sup>2</sup>
IV. spavaca soba 1	16.24 m <sup>2</sup>
V. spavaca soba 2	8.73 m <sup>2</sup>
VI. kupatilo	4.20 m <sup>2</sup>
VII. terasa	6.30 m <sup>2</sup>
<b>UKUPNO</b>	<b>65.56 m<sup>2</sup></b>

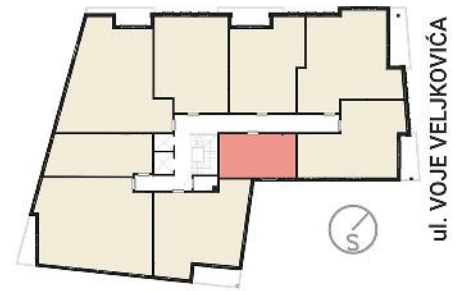
## STAN 34 - 65.56m<sup>2</sup> - III SPRAT





11000 BEOGRAD  
 ul. Miloša Zečevića 1  
 Tel. +381 11/2417 747  
 email: inprus.bg@gmail.com

ul. ILINDENSKA



STAN br. 35	
NAZIV PROSTORIJE	POVRŠINA
I. dnevna soba	17.78 m <sup>2</sup>
II. kuhinja/trpezarija	5.16 m <sup>2</sup>
III. kupatilo	4.00 m <sup>2</sup>
UKUPNO	26.94 m <sup>2</sup>

## STAN 35 - 26.94m<sup>2</sup> - III SPRAT

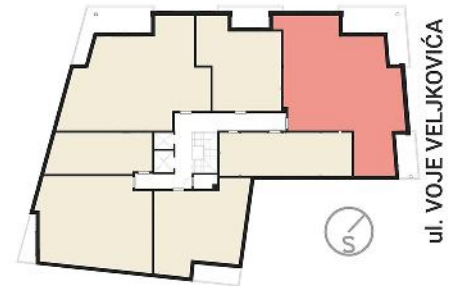
35





11000 BEOGRAD  
 ul. Miloša Zečevića 1  
 Tel. +381 11/2417 747  
 email: inprus.bg@gmail.com

ul. ILINDENSKA



## STAN 36 - 137.23m<sup>2</sup> - POTKROVLJE

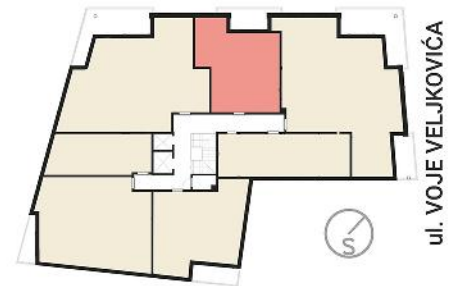
STAN br. 36	
NAZIV PROSTORIJE	POVRŠINA
I. hodnik	13.00 m <sup>2</sup>
II. dnevna soba	25.42 m <sup>2</sup>
III. trpezarija	11.91 m <sup>2</sup>
IV. kuhinja	7.80 m <sup>2</sup>
V. predsoblje	6.23 m <sup>2</sup>
VI. spavaca soba 1	12.47 m <sup>2</sup>
VII. kupatilo	3.32 m <sup>2</sup>
VIII. spavaca soba 2	10.90 m <sup>2</sup>
IX. spavaca soba 3	13.06 m <sup>2</sup>
X. kupatilo	3.96 m <sup>2</sup>
XI. WC	3.34 m <sup>2</sup>
XII. terasa	18.76 m <sup>2</sup>
XIII. terasa	7.08 m <sup>2</sup>
<b>UKUPNO</b>	<b>137.23 m<sup>2</sup></b>





11000 BEOGRAD  
 ul. Miloša Zečevića 1  
 Tel. +381 11/2417 747  
 email: inprus.bg@gmail.com

ul. ILINDENSKA



## STAN 37 - 60.75m<sup>2</sup> - POTKROVLJE

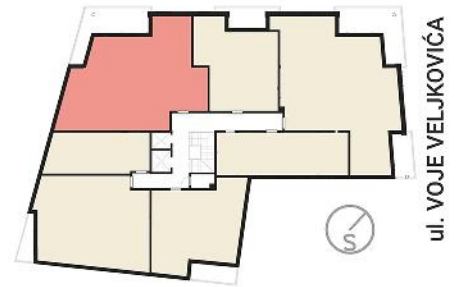
STAN br. 37	
NAZIV PROSTORIJE	POVRŠINA
I. hodnik	3.10 m <sup>2</sup>
II. dnevna soba/trpezarija	24.26 m <sup>2</sup>
III. kuhinja	4.42 m <sup>2</sup>
IV. spavaca soba	16.39 m <sup>2</sup>
V. kupatilo	5.22 m <sup>2</sup>
VI. terasa	7.36 m <sup>2</sup>
<b>UKUPNO</b>	<b>60.75 m<sup>2</sup></b>





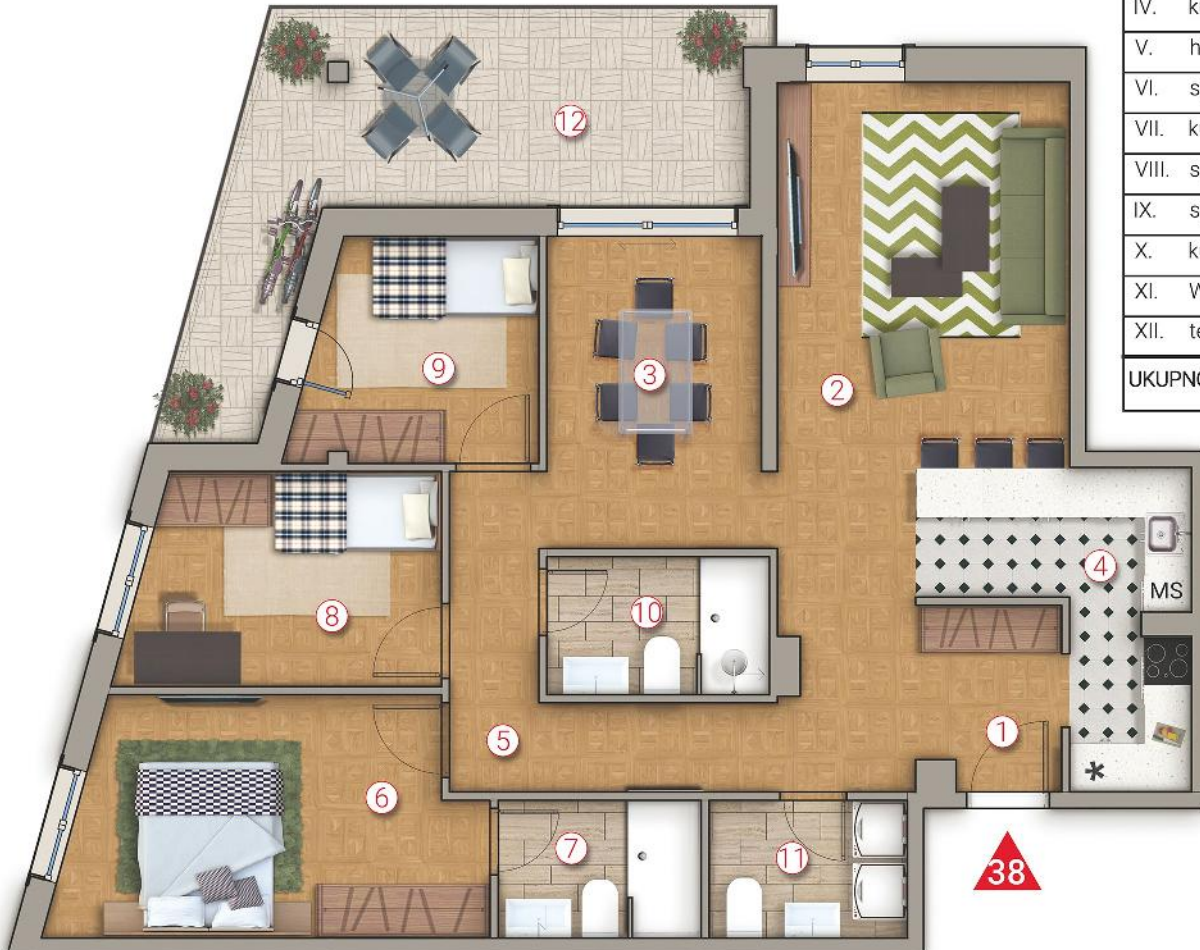
11000 BEOGRAD  
 ul. Miloša Zečevića 1  
 Tel. +381 11/2417 747  
 email: inprus.bg@gmail.com

ul. ILINDENSKA



## STAN 38 - 118.24m<sup>2</sup> - POTKROVLJE

STAN br. 38	
NAZIV PROSTORIJE	POVRŠINA
I. ulaz	7.65 m <sup>2</sup>
II. dnevna soba	20.70 m <sup>2</sup>
III. trpezarija	10.20 m <sup>2</sup>
IV. kuhinja	8.85 m <sup>2</sup>
V. hodnik	7.68 m <sup>2</sup>
VI. spavaca soba 1	14.57 m <sup>2</sup>
VII. kupatilo	4.25 m <sup>2</sup>
VIII. spavaca soba 2	9.84 m <sup>2</sup>
IX. spavaca soba 3	7.76 m <sup>2</sup>
X. kupatilo	4.67 m <sup>2</sup>
XI. WC	4.16 m <sup>2</sup>
XII. terasa	17.91 m <sup>2</sup>
<b>UKUPNO</b>	<b>118.24 m<sup>2</sup></b>

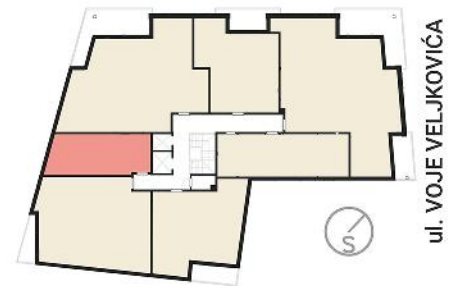






11000 BEOGRAD  
 ul. Miloša Zečevića 1  
 Tel. +381 11/2417 747  
 email: inprus.bg@gmail.com

ul. ILINDENSKA



**STAN 39 - 34.65m<sup>2</sup> - POTKROVLJE**

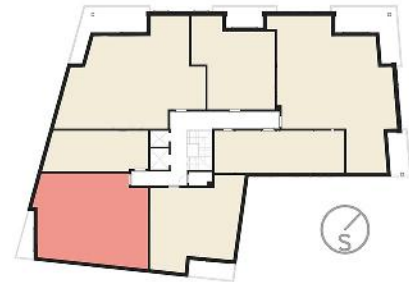
STAN br. 39	
NAZIV PROSTORIJE	POVRŠINA
I. ulaz	2.39 m <sup>2</sup>
II. dnevna soba/trpezarija	24.10 m <sup>2</sup>
III. kuhinja	3.46 m <sup>2</sup>
IV. kupatilo	4.70 m <sup>2</sup>
<b>UKUPNO</b>	<b>34.65 m<sup>2</sup></b>





11000 BEOGRAD  
 ul. Miloša Zečevića 1  
 Tel. +381 11/2417 747  
 email: inprus.bg@gmail.com

ul. ILINDENSKA



ul. VOJE VELJKOVIĆA

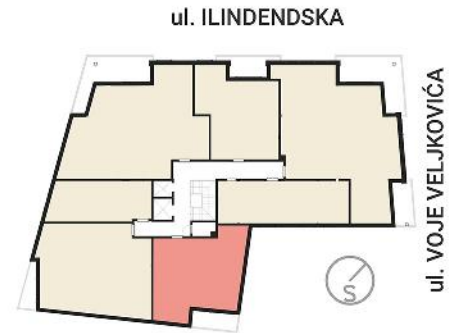
STAN br. 40	
NAZIV PROSTORIJE	POVRŠINA
I. hodnik	8.03 m <sup>2</sup>
II. kuhinja	4.90 m <sup>2</sup>
III. dnevna soba/trpezarija	23.10 m <sup>2</sup>
IV. spavaca soba 1	12.70 m <sup>2</sup>
V. spavaca soba 2	14.32 m <sup>2</sup>
VI. spavaca soba 3	9.20 m <sup>2</sup>
VII. kupatilo 1	4.00 m <sup>2</sup>
VIII. kupatilo 2	4.55 m <sup>2</sup>
IX. terasa	4.63 m <sup>2</sup>
<b>UKUPNO</b>	<b>85.43 m<sup>2</sup></b>

## STAN 40 - 85.43m<sup>2</sup> - POTKROVLJE





11000 BEOGRAD  
 ul. Miloša Zečevića 1  
 Tel. +381 11/2417 747  
 email: inprus.bg@gmail.com



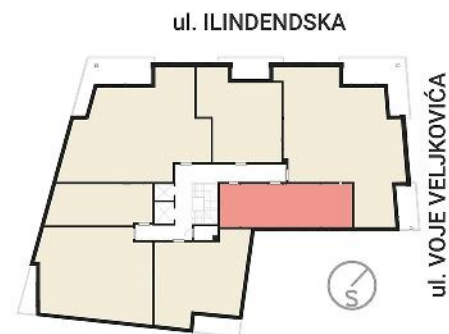
STAN br. 41	
NAZIV PROSTORIJE	POVRŠINA
I. hodnik	4.23 m <sup>2</sup>
II. dnevna soba/trpezarija	21.78 m <sup>2</sup>
III. kuhinja	4.08 m <sup>2</sup>
IV. spavaca soba 1	16.24 m <sup>2</sup>
V. spavaca soba 2	8.73 m <sup>2</sup>
VI. kupatilo	4.20 m <sup>2</sup>
VII. terasa	6.30 m <sup>2</sup>
<b>UKUPNO</b>	<b>65.56 m<sup>2</sup></b>

## STAN 41 - 65.56m<sup>2</sup> - POTKROVLJE





11000 BEOGRAD  
 ul. Miloša Zečevića 1  
 Tel. +381 11/2417 747  
 email: inprus.bg@gmail.com



STAN br. 42	
NAZIV PROSTORIJE	POVRŠINA
I. hodnik	1.91 m <sup>2</sup>
II. kuhinja/trpezarija	5.16 m <sup>2</sup>
III. dnevna soba	16.92 m <sup>2</sup>
IV. spavaca soba	11.06 m <sup>2</sup>
V. kupatilo	4.00 m <sup>2</sup>
<b>UKUPNO</b>	<b>39.05 m<sup>2</sup></b>

## STAN 42 - 39.05m<sup>2</sup> - POTKROVLJE

